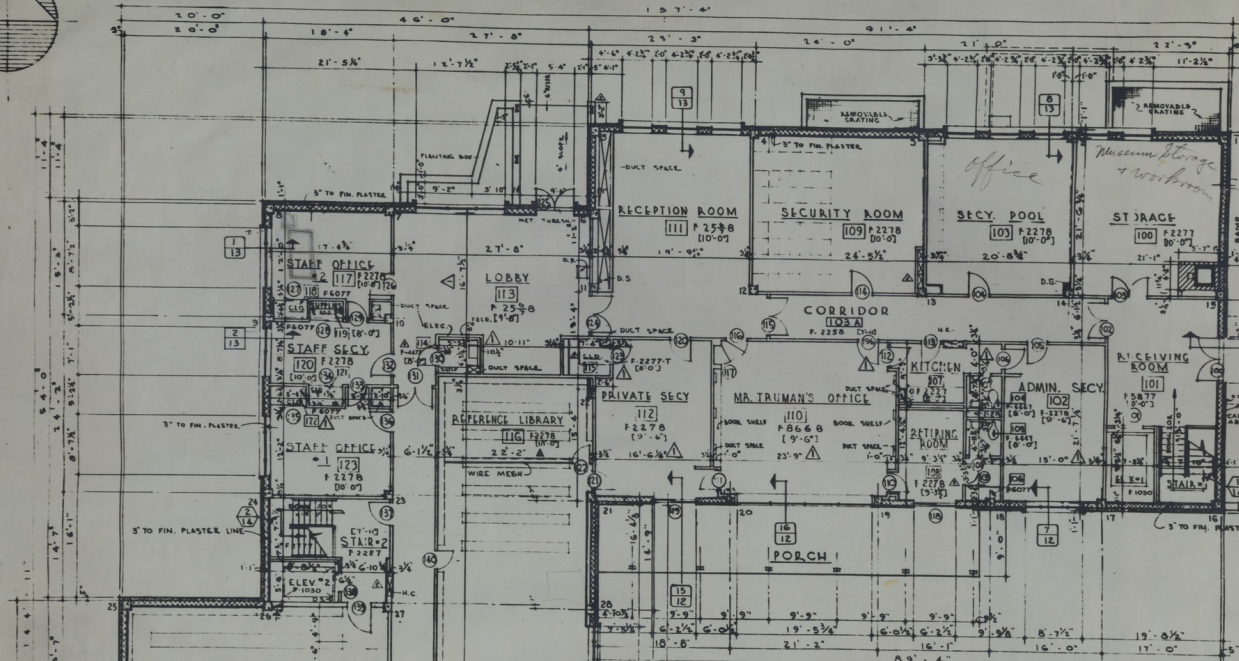


NORTH



FIRST FLOOR PLAN
(NORTH PORTION)
SCALE - 1/8" = 1'-0"

DOOR SCHEDULE										REMARKS	DOOR NO.
NO.	WIDTH	HT.	THICK.	TYPE	DOOR	FRAME	HEAD	TAIL	SILL		
100	3'-0"	7'-0"	1 1/2"	F	WD	6C	1/2"	1/2"	1/2"	WIRE GLASS	151
101	5'-0"	7'-0"	1 1/2"	DOOR	2	FRAME	6C	1/2"	1/2"	CONTR.	152
102	3'-0"	7'-0"	1 1/2"	A	WD	MET	1/2"	1/2"	1/2"		153
103	3'-0"	7'-0"	1 1/2"	A	WD	MET	1/2"	1/2"	1/2"		154
104	3'-0"	7'-0"	1 1/2"	A	WD	MET	1/2"	1/2"	1/2"		155
105	3'-0"	7'-0"	1 1/2"	A	WD	MET	1/2"	1/2"	1/2"		156
106	3'-0"	7'-0"	1 1/2"	A	WD	MET	1/2"	1/2"	1/2"		157
107	2'-4"	7'-0"	1 1/2"	B	WD	MET	1/2"	1/2"	1/2"		158
108	2'-4"	7'-0"	1 1/2"	B	WD	MET	1/2"	1/2"	1/2"		159
109	4'-8"	6'-8"	1 1/2"	A	WD	MET	1/2"	1/2"	1/2"	SLIDING	160
110	2'-8"	7'-0"	1 1/2"	WD	WD						161
111	2'-8"	7'-0"	1 1/2"	WD	WD						162
112	2'-8"	7'-0"	1 1/2"	WD	WD						163
113	3'-0"	7'-0"	1 1/2"	B	WD	MET	1/2"	1/2"	1/2"		164
114	3'-0"	7'-0"	1 1/2"	A	WD	MET	1/2"	1/2"	1/2"		165
115	3'-0"	7'-0"	1 1/2"	D	WD	MET	1/2"	1/2"	1/2"	OBSCURE GLASS	166
116	3'-0"	7'-0"	2"	WD	WD						167
117	2'-8"	7'-0"	1 1/2"	WD	WD						168
118	6'-0"	6'-11"		G	AL	AL				SLIDING, DOUBLE GLAZED, TRANSP.	169
119	6'-0"	6'-11"		G	AL	AL				SLIDING, DOUBLE GLAZED, TRANSP.	170
120	3'-0"	7'-0"	1 1/2"	A	WD	MET	1/2"	1/2"	1/2"		171
121	2'-8"	7'-0"	1 1/2"	A	WD	MET	1/2"	1/2"	1/2"		172
122	2'-8"	7'-0"	1 1/2"	WD	WD						173
123	2'-8"	7'-0"	1 1/2"	A	WD	MET	1/2"	1/2"	1/2"	BY WIRE PARTITION CONTR.	174
124	3'-0"	7'-0"	1 1/2"	D	WD	MET	1/2"	1/2"	1/2"	1" CRACK	175
125	2'-4"	7'-0"	1 1/2"	G	AL	AL				TRANSP. TEMPERED PLATE GLASS	176
126	2'-4"	7'-0"	1 1/2"	G	AL	AL				TEMPERED PLATE TRANSP.	177

Accession Number M69

Description

Two prints, taped together, that show a portion of the proposed first floor of the Harry S. Truman Library. The plan shows the dimensions of each room and includes a table regarding doors. Handwriting on the front reads: "Office," "Museum Storage and Workroom," and "Microfilm Reading Rm." Handwriting on the back reads: "HST wing, Dir's offices," "First Floor," and "Main Floor."

Date(s)

Cartographer Architects: Gentry and Voskamp, Kansas City, Missouri. Neild-Somdal Associates, Shreveport, Louisiana.

Keywords [Presidential libraries](#)

Photo Color Color

Physical Size 33 X 25 1/2 inches

Related Collection (Plain)

Harry S. Truman Library, Inc. Records

Restrictions Unrestricted

Scale 1/8 inch = 1 foot

TIF Identifier M69.tif

Rights

This item is in the public domain and can be used freely without further permission.

Note: If you use this image, rights assessment and attribution are your responsibility.

Credit: Architects: Gentry and Voskamp, Kansas City, Missouri. Neild-Somdal Associates, Shreveport, Louisiana.

Courtesy Harry S. Truman Library & Museum, Independence, Missouri.

Attention media: Please make note of this item's map number. Print out this page and retain it for your permissions records before downloading this image file for possible publication. Library staff cannot sign permissions forms or provide additional paperwork. The Library charges no usage fees for downloaded images. Fees are charged for higher resolution scans.